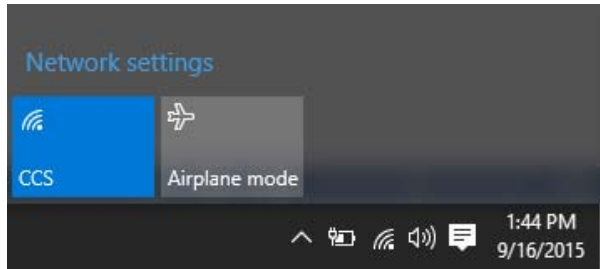
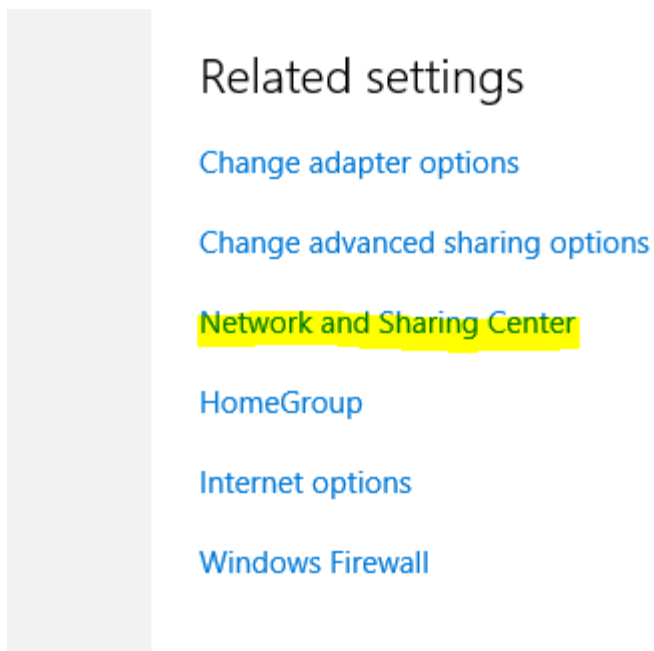


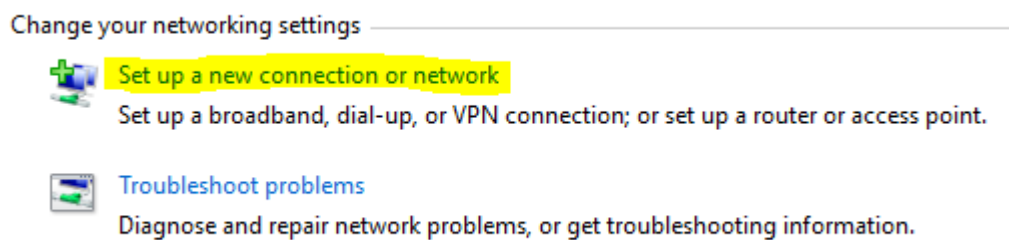
Connecting a non CCS Windows device to the CCS wireless network:
Click on the Radio icon in the system tray to display Network settings. Left click on Network settings



On the new menu that appears, left click on Network and Sharing Center.



Select, Set up a new connection or network, on the menu below.





On the new menu, click on, Manually connect to a wireless network.





←  Set Up a Connection or Network

Choose a connection option

 **Connect to the Internet**
Set up a broadband or dial-up connection to the Internet.

 **Set up a new network**
Set up a new router or access point.

 **Manually connect to a wireless network**
Connect to a hidden network or create a new wireless profile.

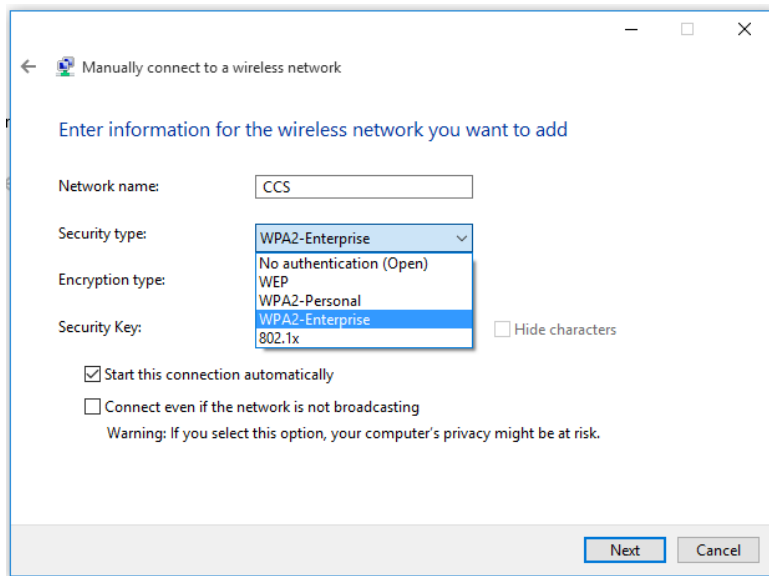
 **Connect to a workplace**
Set up a dial-up or VPN connection to your workplace.

Next

Cancel

In this windows. Type CCS, all upercase, in the Network name field.

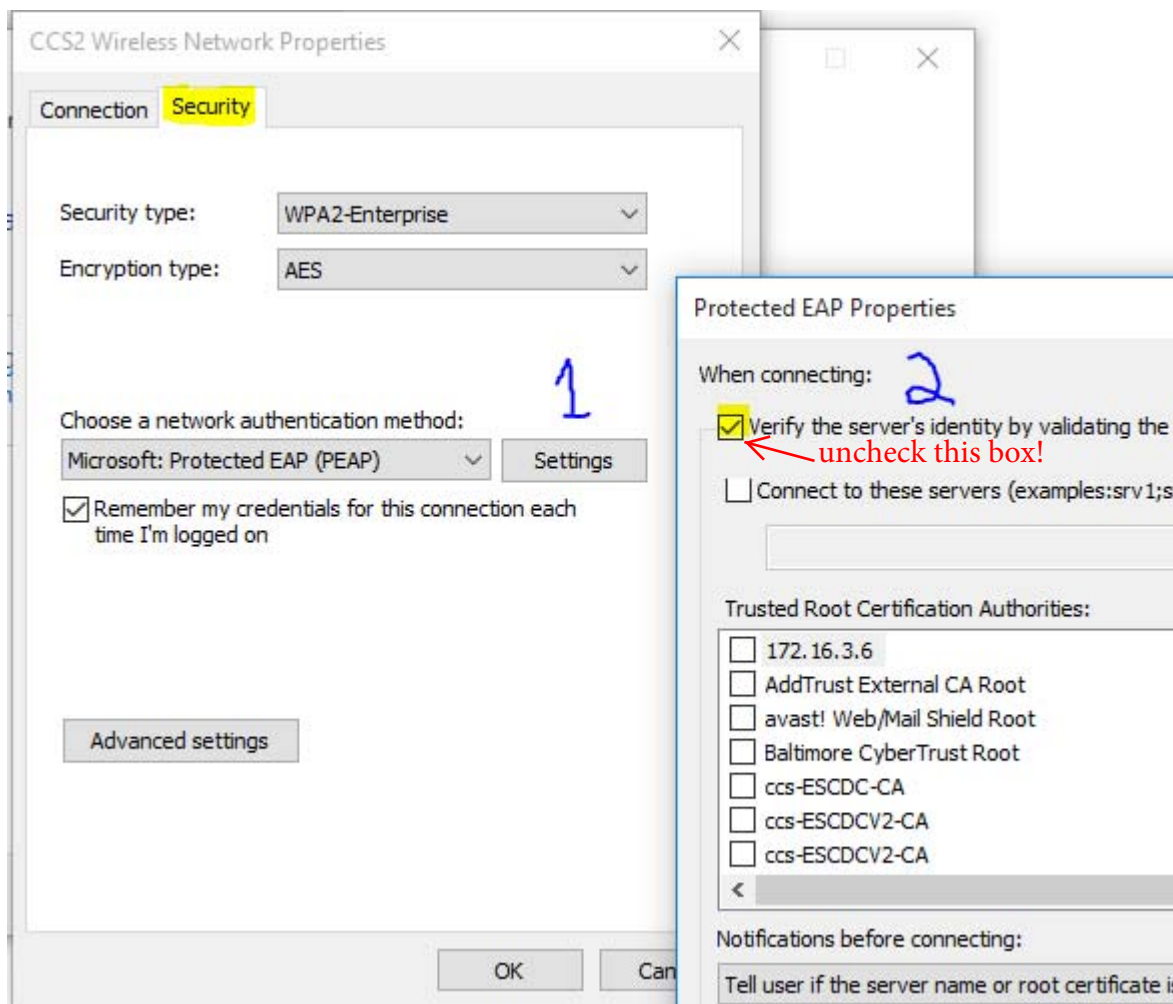
Then select WPA2-Enterprise from the Security type drop down and now click Next.



After click next, click on the Change connection settings link.

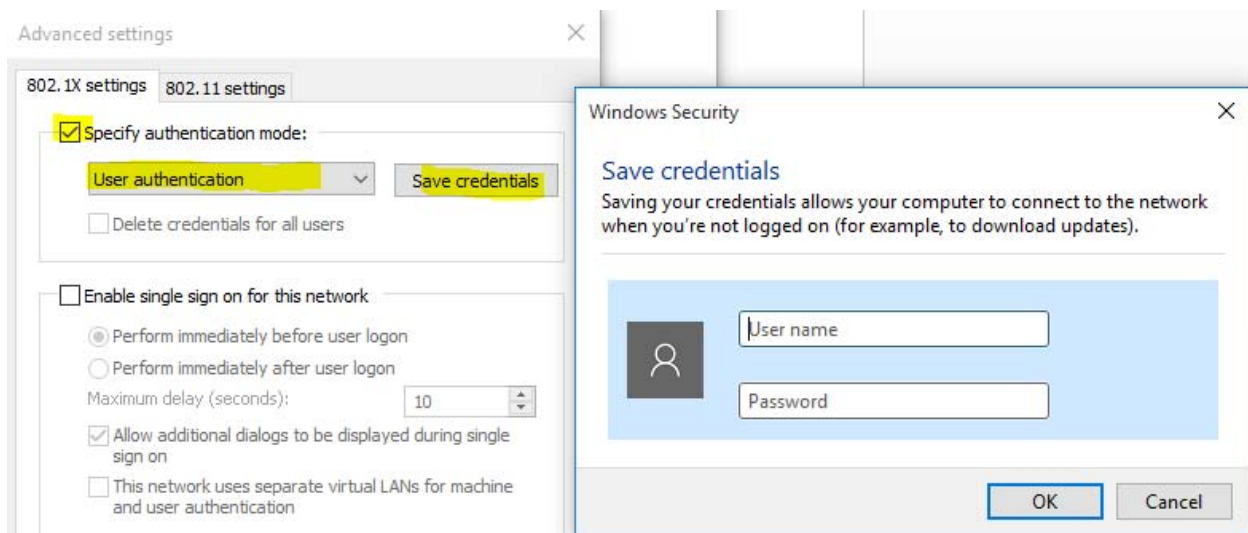
→ [Change connection settings](#)
Open the connection properties so that I can change the settings.

Click on the Security tab along the top and then the Settings button below the #1. Uncheck the Verify box to the left of #2.



Click on OK on the Protected EAP Properties page. And click the Advanced Settings button back on the Security tab.

Add the check mark to Specify authentication mode, use the drop down to select User authentication and then click on Save credentials. This will give the student the ability to put there CCS username in. They will need to put **CCS**TheirUsername into the username field.



Hit ok, to back out. The student is now on the CCS wireless.