

Cherry Tree Chatter

A copublication of CTE and the CTE PTO

Publication Date: April 1, 2021

Upcoming Events at CTE:

April 2nd-April 9th
Spring Break-No School

April 13th
Spirit Day

April 13th
Math Bowl Competition

April 14th
Wednesday Bakers

April 15th
Spring Trivia Night Fundraiser-6:30pm

April 17th
Drive-A-Bus Event 10am-1pm
@ CHS Football Stadium

April 19th-May 14th
ILearn Testing Window (Grades 3-5)

April 21st
Late Start~School Begins at 8:30 am
EC Family Support Day

May 3rd
National School Nurse Day

May 3rd-7th
Teacher Appreciation Week

May 4th
Spirit Day

May 5th
Late Start~School Begins at 8:30 am

~ NEW ~
Spring Break!
April 2nd-9th

We hope everyone has a safe relaxing Spring Break!

Happy Spring Break

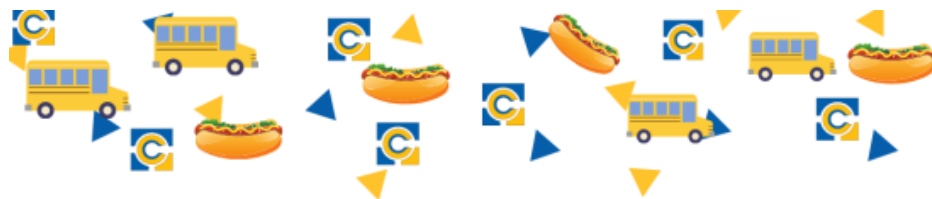
~ NEW ~
Food & Nutrition
Services is hiring



Food & Nutrition Services has full-time and substitute food service positions available. Recruitment is going on now for these existing open positions and for positions that will become available at the start of the 2021-2022 school year.

[Click here for more information](#)

~ NEW ~
CCS Drive-A-Bus
Event
April 17, 2021



*CURIOUS ABOUT A FLEXIBLE JOB WITH EXCELLENT PAY AND SUMMERS OFF?
HOP IN THE DRIVER'S SEAT AND SEE WHAT IT'S ABOUT AT OUR*

DRIVE-A-BUS EVENT

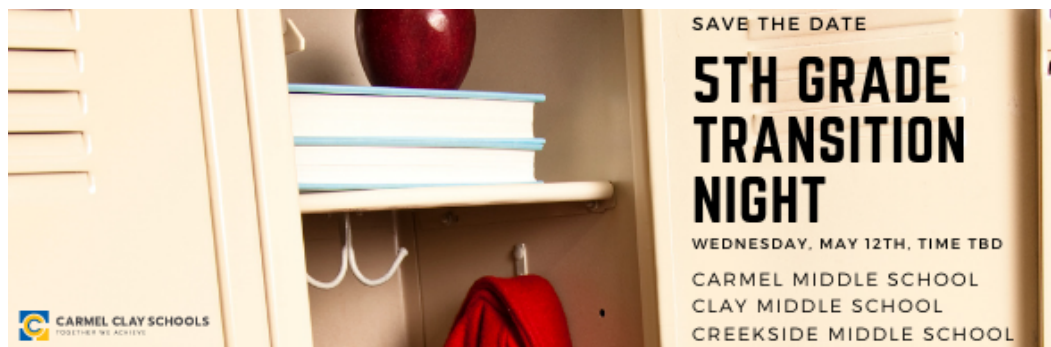
SATURDAY, APRIL 17TH, 10AM - 1PM
AT THE CHS FOOTBALL STADIUM

ASK QUESTIONS, LEARN ABOUT OUR FREE TRAINING
+ HAVE A HOTDOG ON US!

(MUST BE 21+ WITH A VALID DRIVER'S LICENSE TO PARTICIPATE)



~ NEW ~
5th Graders
Save the Date!



Mark your calendars for the evening of May 12th and join us for the **5th Grade Transition Night** at each of our middle schools. Students and parents are invited to explore their new school, ask questions and meet new classmates.

The exact times and further details will be announced soon.

Be sure to check out these short middle school welcome videos:

[Carmel Middle School](#)

[Clay Middle School](#)

~ NEW ~
Summer Break
Chromebook
Information

GRADES K-8 TAKE CHROMEBOOKS HOME FOR THE SUMMER



*Students grades K-8
may use Chromebooks
for educational review, if
appropriate for your family.*

**Only those students not returning to CCS should return Chromebooks. All others, grades K-8, regardless of change in schools or grade levels within the district should keep your Chromebook.*

Or unplug for the summer!



*Choose a safe place to store device and charger and
bring it back in August when we return to school.*



CARMEL CLAY SCHOOLS
TOGETHER WE ACHIEVE

~ NEW ~
Spring Break
International
Travel

International Travel Update & Summer Chromebook Information



Please be aware that CCS will follow the CDC guidelines for anyone returning from international travel to get tested 3-5 days after travel AND quarantine for 7 days upon return. Those who don't get tested will need to quarantine for 10 days after international travel. If you are traveling internationally, please follow these guidelines and contact the CCS Covid-19 Hotline at 317-571-4630, which will remain open during the break.

Note, there are no restrictions or testing requirements for domestic travel.

We continue to ask that everyone please use the mitigation strategies of correct and consistent mask use, social distancing, hand and cough hygiene, environmental cleaning and disinfection, avoiding crowds, and self-monitoring for symptoms of Covid-19 illness. Per the governor's guidance, we will continue to wear masks at school.

[Review our COVID-19 Screener Questions](#) and please continue to keep children home if they are feeling ill.

~ INFO ~
Carpool



Spring Reminders:

As the weather gets warmer please recognize our “no idle zone” and turn off your vehicles while waiting for your student(s).

Thank you for your work in making the carpool efficient and safe! You can reference the procedures here:

[Morning](#)
[Afternoon](#)

~ INFO ~



Late Start Calendar

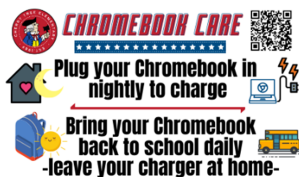
Click on the link below to see calendar dates for late starts. On late start days school will begin at 8:35 am. Bus routes will arrive 40 minutes later. Please log on to your [Parent Powerschool Portal](#) for exact pick up times.

[Late Start Calendar Dates](#)

ESE (Carmel Parks & Recreation Student Enrichment Program) will offer a Late Start Program for all CTE Students. Pre-registration is required. Click on the link for registration instructions.

[ESE Late Start Program](#)

Chromebook Care



Make sure you charge your chromebook each evening and don't forget to bring your chromebook to school each day!!

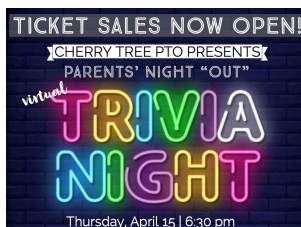
Please be advised that students will begin bringing home their Chromebooks each night, starting Monday, November 16th. Chargers should remain at home. A video will be sent out for students and families to review best practices on handling their Chromebooks. We suggest families choose a specific 'home' for their student's Chromebook, where it can be charged and brought back ready for use the next school day.

Please visit the [Canvas Parent FAQ Page](#) or [Virtual Learning Support](#) websites for additional support.

Please review the below Chromebook FAQ's for more information on how to care for your Chromebook.

[Chromebook FAQ's](#)

Parents' Virtual Trivia Night



**Time to get your tickets for the
2021 Parents Night “Out” Virtual Trivia Night!**

Thursday, April 15 | 6:30pm

Click the link for Tickets and to register to be a part of the auction (even if you aren't playing trivia you can still bid!)

<https://qtego.net/qlink/cherrytreeschool/register>

Check out the PTO's social media over the next week or so for a sneak peak at the amazing AUCTION items they've secured!

You can also TEXT the word CHERRY to 72727 to register for the auction.

Full Event Details at the end of Chatter!

Trivia Night Hosts



Are you wondering to yourself “what exactly IS Hambone's Trivia?”

Our committee chairs put together a video to help explain how trivia over Zoom and utilizing breakout rooms will work.

<https://www.ccs.k12.in.us/pto-cte/fundraising/spring-fundraiser>

Wellness Week



Get your student entered to win a \$25 gift card to **Target!**

[ENTER HERE!](#)

POPs Wants YOU!

Here's your #CTEPOPSDADJOKES chuckle of the week!

Interested in hearing more about joining our amazing group of Patriot Dads? Email David Glenn with questions or to sign up at dglenniu@gmail.com.



Spirit Shop Still Open!



Don't forget
Limited Sale Items going on NOW!

Stock up before inventory runs out on these great items at great prices.

Check out www.ctespiritshop.com for current inventory!

Complete this form to share with us about your local business.

Easy Ways to Support Cherry Tree



Kroger has a community rewards program as well! Login in to your Kroger account and choose Community Rewards to add Cherry Tree from the list of organizations. Kroger donates a percentage of your spending to our school.

Box Tops



The app identifies eligible products and automatically adds Box Tops to our school's earnings online. Even if you're shopping online or doing grocery pickup, you can still submit your e-receipts and earn Box Tops. If you are struggling to remember to scan your receipts, go to the communication settings under your account and set up scan reminders, you can customize them to match your shopping routine!

You can view a list of participating products here:

We received \$342 from Box Tops from the first semester. We would love to exceed that amount for the second semester so please download the app and scan those receipts. It's an incredibly easy way to help support our Cherry Tree teachers and students!

~ INFO ~
Media Center
Volunteers
Needed



For more info you can email Melissa Putts at melissaputts@yahoo.com, Megan Droste at medroste@gmail.com or simply [click](#) on the google form to submit your request to volunteer. Thank you! *Background check required*



Treasurer's Report

Learn more about how your PTO dollars were used last month to enhance the student experience at CTE by visiting the PTO's budget documents on our website. The monthly report can be found [HERE](#) under the Treasury Summaries.



We continue our great efforts at Cherry Tree to raise productive and safe digital citizens! Please see the linked family resource from Common Sense Media. These are great resources!

[Control Your Phone. Don't Let It Control You](#)

~ INFO ~ CCS Covid Page



**CARMEL CLAY
SCHOOLS**
TOGETHER WE ACHIEVE



Please ask yourself these 4 screener questions:

- 1) In the last 24 hours have you had a fever or chills and/or taken medication for a fever? (If you are unsure, please utilize a thermometer for an accurate reading. A temperature of 100.4 or higher constitutes a fever according to medical professionals)
- 2) Do you have COVID-19 symptoms such as new, uncontrolled cough that causes difficulty breathing, sore throat, diarrhea/vomiting, or loss of taste or smell?
- 3) In the past 14 days have you been in close contact (was within 6 feet for longer than 15 minutes without protective equipment) with a person known/suspected to have COVID-19 and/or have you been diagnosed with COVID-19?
- 4) Have you or anyone in your household been tested for COVID-19 and are still awaiting test results?

**If the answer to question #4 is YES---Please do not send your student(s) to school.
If you or anyone in your household is being tested or waiting on results, your student
MUST quarantine until results are received.**

~ INFO ~ Stopit App

Click on the [link](#) for the newest "Stopit App" information. The code to use is **CTECARES**

TICKET SALES NOW OPEN!

CHERRY TREE PTO PRESENTS

PARENTS' NIGHT "OUT"

virtual TRIVIA NIGHT

Thursday, April 15 | 6:30 pm

JOIN US FOR A FUN NIGHT TO HELP RAISE FUNDS THAT DIRECTLY SUPPORT OUR VALUABLE TEACHERS & SCHOOL-WIDE PROGRAMS!

TICKETS:

- Parent Team (4-10 people) \$250
- Individual Tickets \$40
- Teacher Team (4-10 people) Free
(Paid for by our sponsors)

Team tickets include a team SWAG BAG! Dropped off to team captain's house prior to the event

Team members do NOT need to be at the same location for the event. We will use virtual breakout rooms.

Individual tickets will be placed on a virtual team.

TICKET LINK:

[HTTP://QTEGO.NET/QLINK/CHERRYTREESCHOOL](http://QTEGO.NET/QLINK/CHERRYTREESCHOOL)

SEE OTHER SIDE FOR SPONSORSHIP & PRIZE GIVEAWAY INFORMATION!

For more information, email CTEFundraiser@gmail.com

SPONSORSHIPS

Event Sponsorship \$500

Includes a Trivia Team (4-10 people) OR Sponsor a Teacher Team
Team swag bag

Sponsor logo featured on event website, social media, school wide newsletters, and trivia host's virtual background.

Ability to add business promo items/goodies with your company info/logo for the team swag bags.

Event + Trivia Round Sponsorship \$1,000

Only 4 Trivia Round Sponsors available. Will receive all items listed above as the event sponsor in addition to acknowledgment during the round as sponsoring the round by our event host.

FOR MORE INFORMATION ON SPONSORING,
EMAIL CTEFUNDRAISER@GMAIL.COM

PRIZE GIVEAWAY

There will be prize
giveaway opportunities
after each Trivia Round
including great school
excitement packages
and items donated from
the community!

To purchase tickets in advance or to see the auction items, visit:

[HTTP://QTEGO.NET/QLINK/CHERRYTREESCHOOL](http://QTEGO.NET/QLINK/CHERRYTREESCHOOL)

If you are interested in donating items, please email CTEFundraiser@gmail.com